

A= claro total

B= claro de los paneles plegables

C= claro de la puerta

D= claro de panel corto

E= claro de panel largo

H= altura total del claro

$$E = \frac{B - 50}{\# \text{ de paneles } E + 0.50}$$

$$D = \frac{E}{2} + 50$$

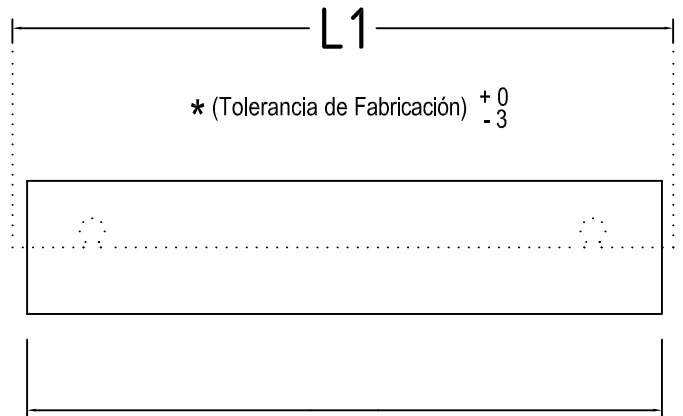
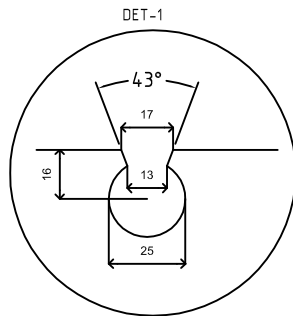
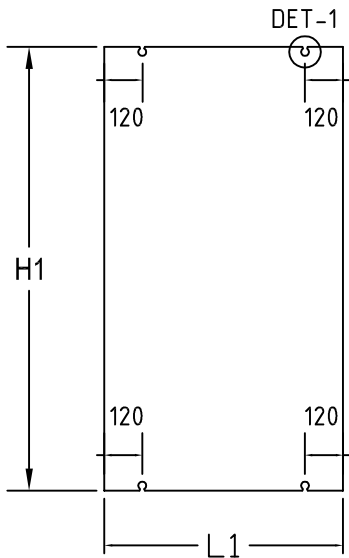
$$\text{Ancho zoclo plegable largo (Lpll)} = \frac{B - D - 10 \text{ mm}}{\# \text{ de paneles largos}} - 13 \text{ mm}$$

$$\text{Ancho zoclo plegable corto (Lplc)} = D - 13 \text{ mm}$$

$$\text{Ancho Zoclo Puerta (Lpt)} = C - 18 \text{ mm}$$

* $\text{Ancho del Cristal (L1)} = \text{Zoclo (Lpll/Lplc/Lpt)} + 10 \text{ mm}$

$$\text{Altura del Cristal (H1)} = H - 190 \text{ mm}$$



Lpll / Lplc / Lpt

